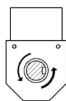
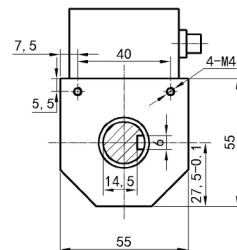
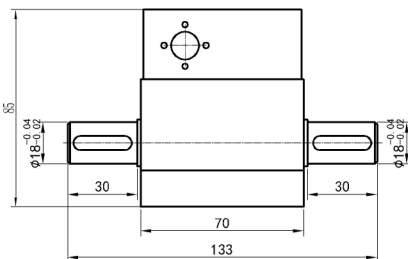




量程/Capacity: 0~20/30/50/100N.m



●参数/Specifications:

量程/Capacity(N.m)	0 ~ 20/30/50/100N·m
精度/Accuracy	0.2/0.5% (F S)
环境温度/Ambient temperature	- 20℃ ~ 50℃
频率响应/Frequency response	100 μs
输出信号/Output Signal	<ul style="list-style-type: none"> ●零扭矩:10KHZ 正向满量程:15 KHZ 反向满量程:5 KHZ ●可以配变送器或者仪表, 输出: 开关量、 模拟量 (0 ~ ±10V/0 ~ ±5V/4 ~ 20mA) 数字量 (RS232/RS485)
输出电平/Output level	0-12v 负载电流<10mA
信号插座/Signal socket	(1)0V. (2)+15V. (3)-15V. (4)扭矩信号.

●特点: 电阻应变为敏感元件和集成电路构成的一体产品, 综合精度高, 体积小, 稳定性好, 抗干扰强。可高速长时间运转, 可测量正反两方向扭矩值。两端为轴键连接, 安装使用方便, 转速可选, 最高转速可达到 4000 转/秒。